

PLANNING AN ELEPHANT'S PARTY



by **Raye Lankford**

MARTHA SPEAKS™

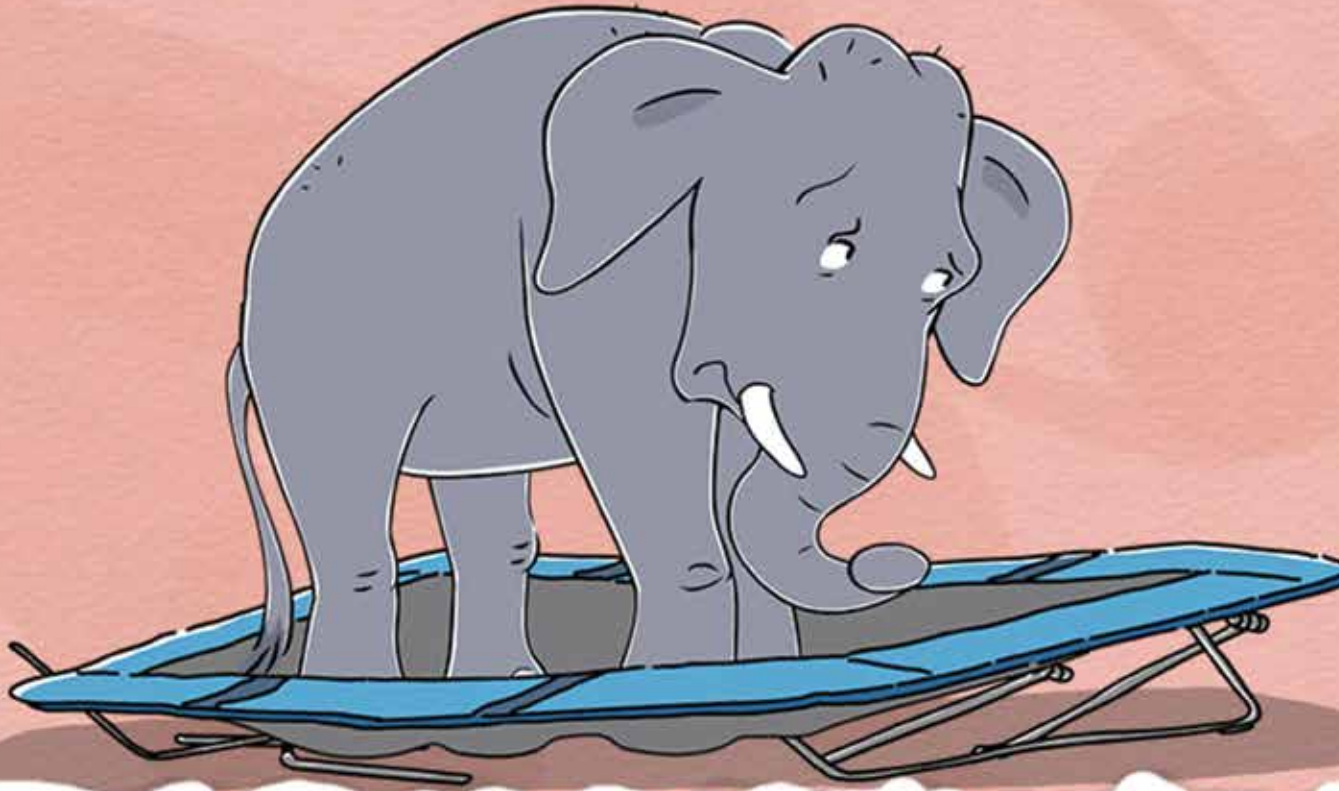


All characters and underlying materials from the "Martha" books™ and Susan Meddaugh. All other characters and underlying materials™ and 2013 WGBH. FOR PROMOTIONAL USE ONLY.

The contents of this printable certificate were developed under a grant from the Department of Education. However, those contents do not necessarily represent the policy of the Department of Education, and you should not assume endorsement by the Federal Government. The project is funded by a Ready to Learn Grant (PR/AWARD No. U295A100025, CFDA No. 84.294A) provided by the Department of Education to the Corporation for Public Broadcasting.



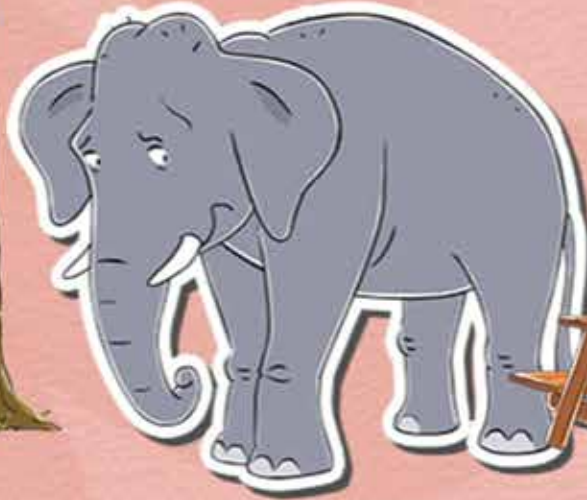
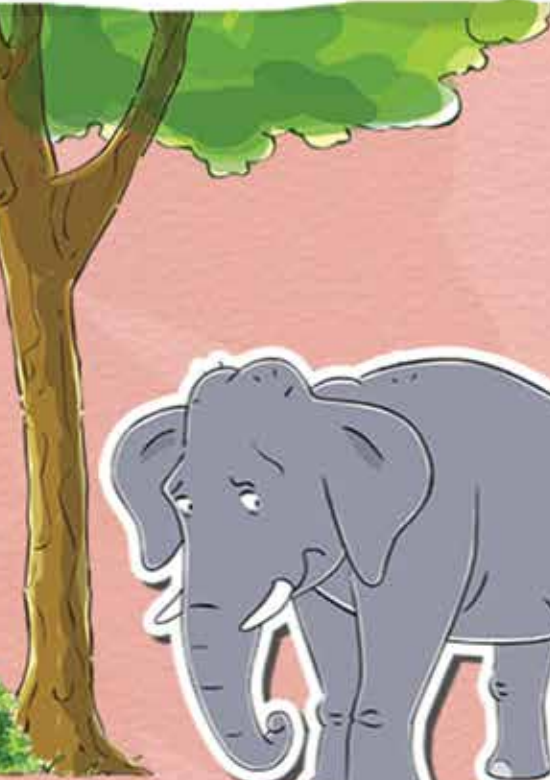
If you're planning a birthday party for your elephant, be sure to do things an elephant will like.



A trampoline party might be a bad idea because elephants are so **heavy**.

heavy: when something is heavy, that means it weighs a lot.

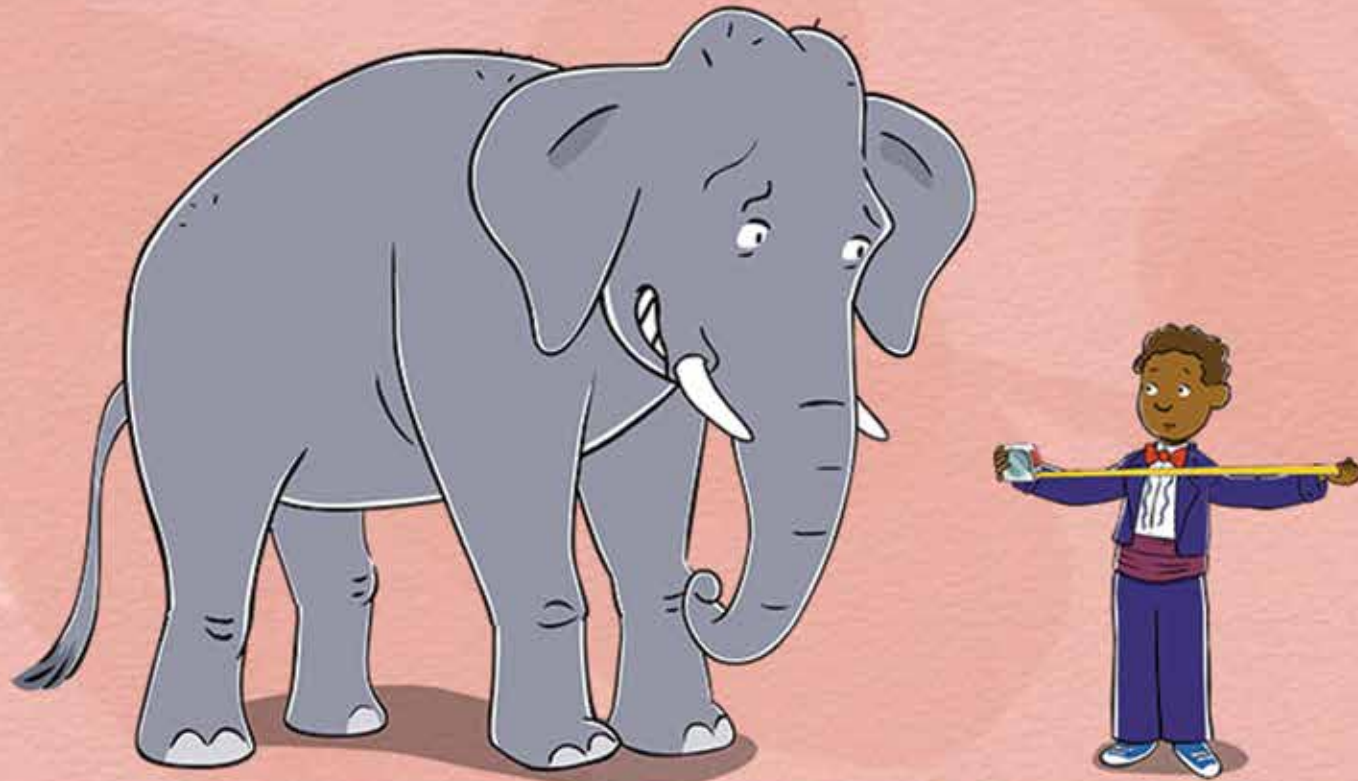
**MARTHA
SPEAKS**[™]



Playing hide-and-seek with an elephant might also be a bad idea because elephants are so **huge!** There's no place big enough for Jeffy to hide!

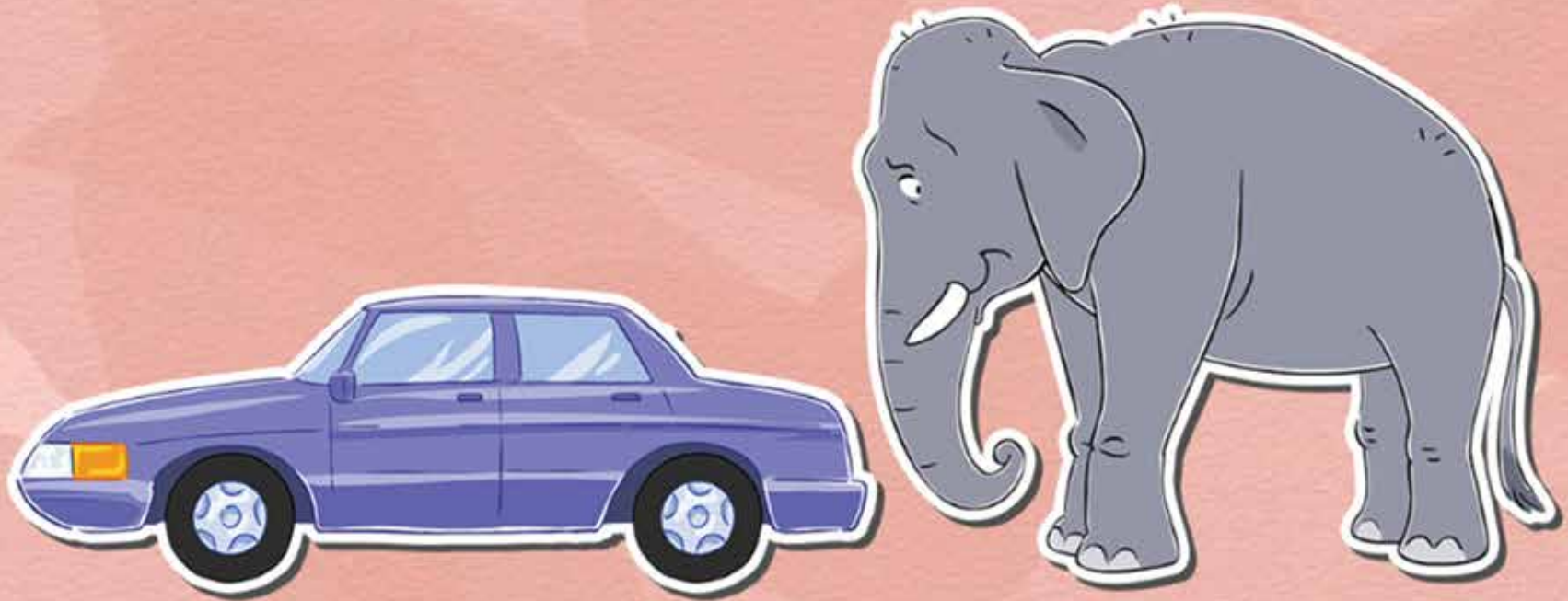
huge: when something is huge that means it is really, really big.

**MARTHA
SPEAKS™**



A magic show might be fun for an elephant's birthday party, but you should make sure your elephant will fit on the stage. If your elephant is really big, you might not be able to get your elephant's **exact** length.

exact: when something is exact, it means it is just right.

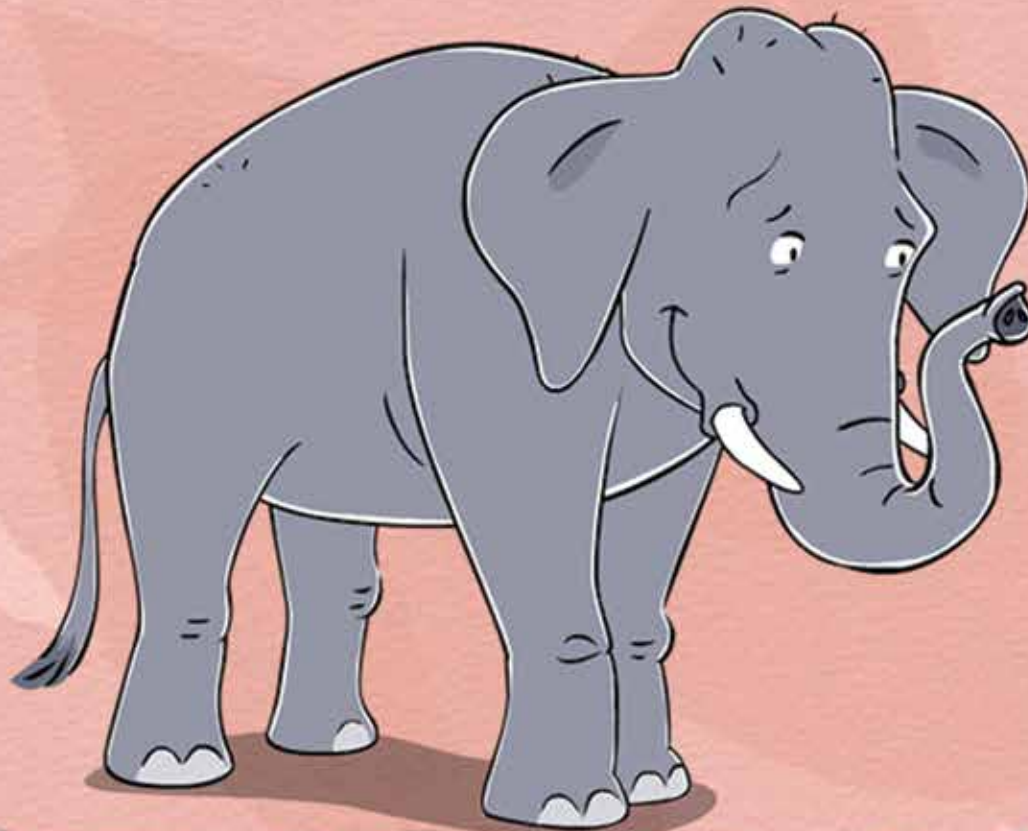


But don't worry. You can **compare** your elephant to other things and **approximate** how big he is. Compared to a car, Jeffy is twice as tall and almost as long! But there's no way to tell if a car will fit on stage either.

compare: when you compare things, you think about how those things are the same, alike or different from each other.

approximate: when you approximate, it means you make a guess about something using what you already know.

**MARTHA
SPEAKS™**

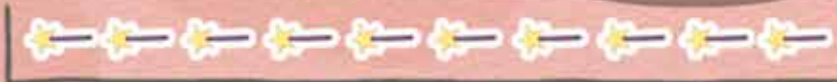
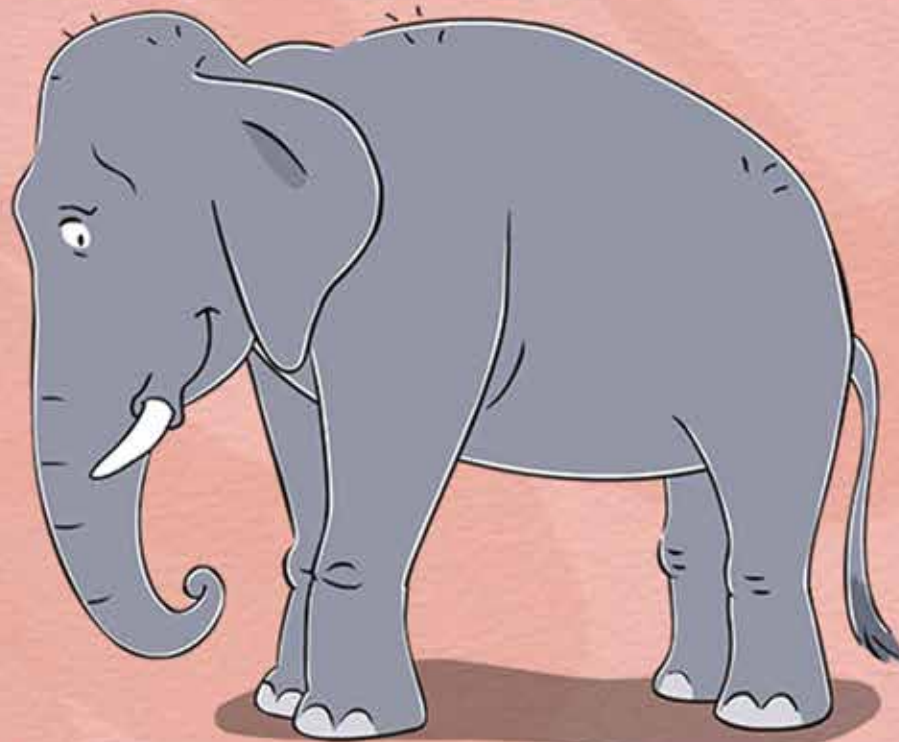


Luckily, you can get an **exact** measurement by **comparing** your elephant to something that's a smaller **size** - like this magic wand!

exact: when something is exact, it means it is just right.

comparing: when you compare things, you think about how those things are the same, alike or different from each other.

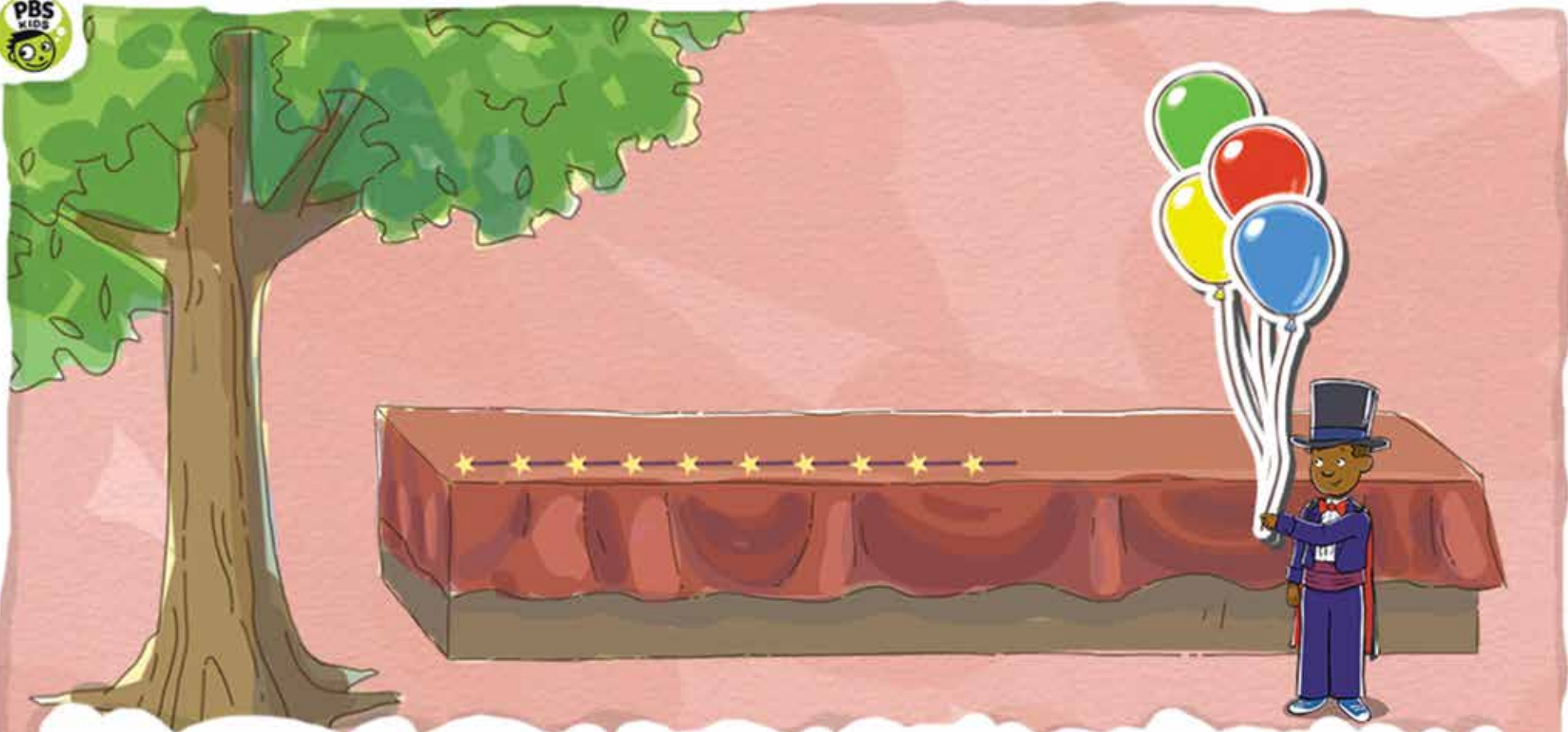
size: size means how big or small something is.



Our elephant's length **equals** exactly ten magic wands. Can you use the magic wands to **check** if we counted right?

equals: when two things are equal, it means they are the same in a certain way.

check: when you check something, it means you make sure its right.



Look! The length of the stage is a lot bigger than ten magic wands! That means we can **estimate** that our elephant will fit just fine! Time to decorate for the party!

estimate: when you estimate, it means you make a careful guess.

**MARTHA
SPEAKS™**



It takes a lot of planning to have a party for an elephant. But if you measure carefully, your party will be a **huge** hit!

huge: when something is huge that means it is really, really big.