



KIBBLE CONTRAPTION

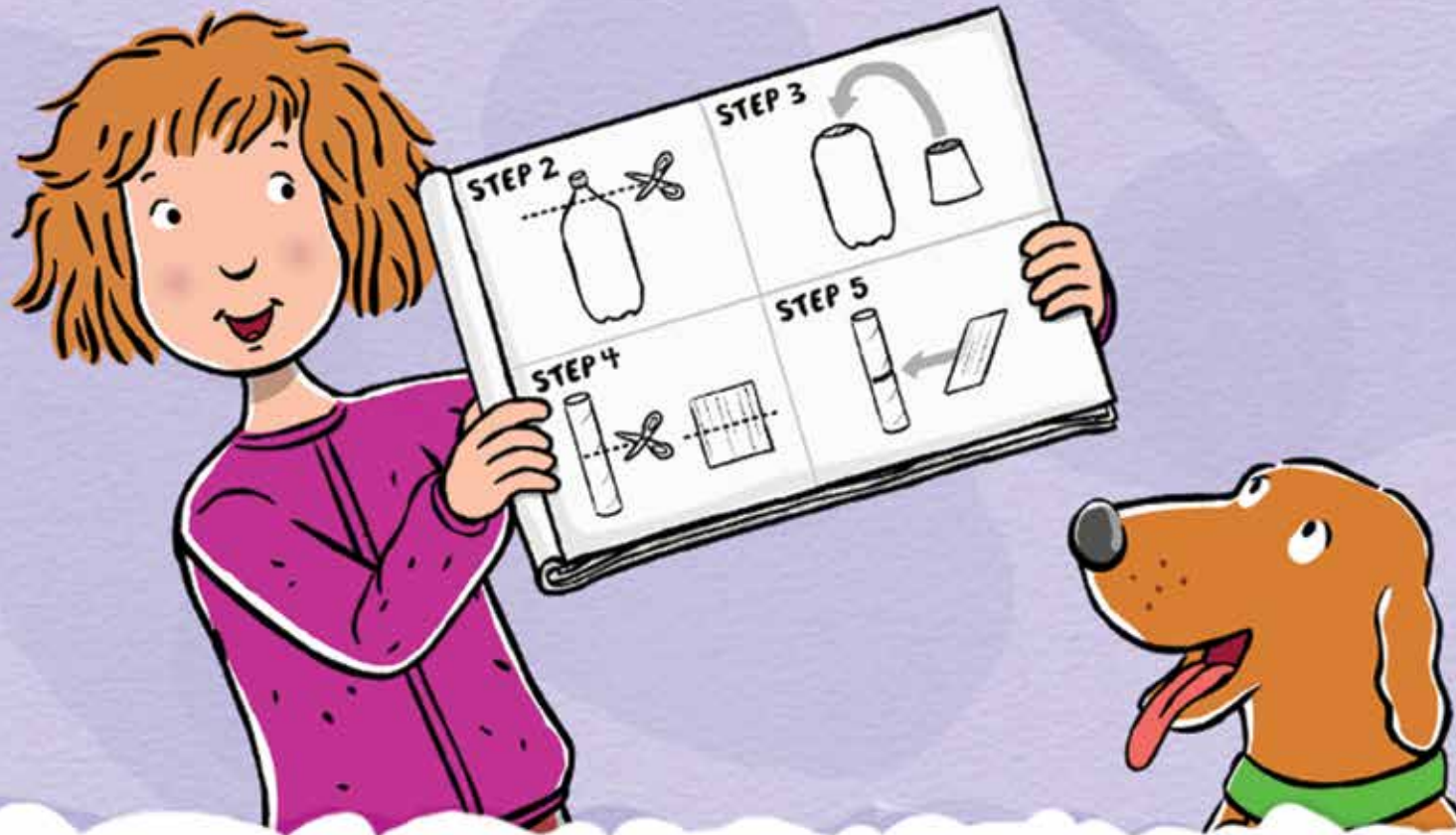


This manual shows you how to make a dog feeder. If you don't have a dog, you could use it for serving breakfast cereal. You can make this contraption with Helen on your computer or at home with a grown-up.



All characters and underlying materials from the "Martha" books™ and Susan Meddaugh. All other characters and underlying materials™ and 2013 WGBH. FOR PROMOTIONAL USE ONLY.

The contents of this printable certificate were developed under a grant from the Department of Education. However, those contents do not necessarily represent the policy of the Department of Education, and you should not assume endorsement by the Federal Government. The project is funded by a Ready to Learn Grant (PR/AWARD No. U295A100025, CFDA No. 84.294A) provided by the Department of Education to the Corporation for Public Broadcasting.



When you follow **instructions** to make something, you have to do the **steps** in order or it may not end up working the way it's supposed to.

instructions: instructions tell you how to do something.

steps: when you do something, steps are what you do first, next, and last.

**MARTHA
SPEAKS**



1 2-liter empty
soda bottle



cardboard



2 small
paper cups



1 paper
towel tube



masking
tape



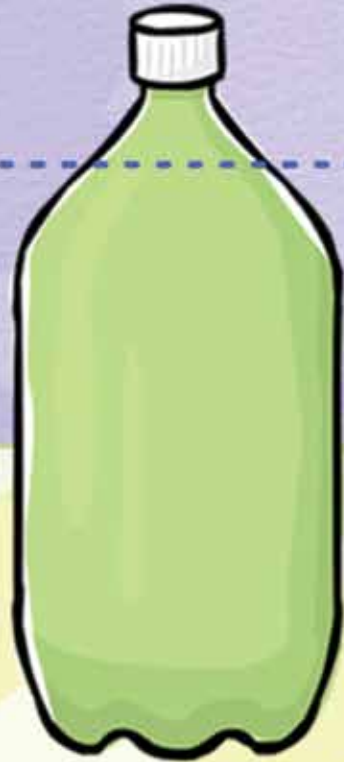
scissors

STEP 1

First, find the **materials** you'll need:

materials: material is what something is made from.

MARTHA
SPEAKS™



STEP 2

Next, **follow** the **directions**: With a grown-up's help, cut off and then **detach** the spout from the empty bottle with scissors.

follow: when you follow directions you listen or read to understand what you need to do, and then you do what the directions tell you to do.

directions: directions tell you how to do something.

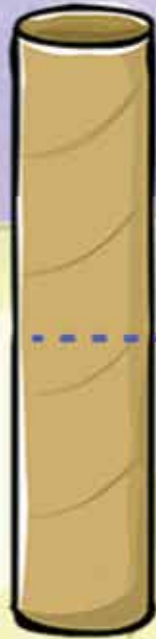
detach: when you detach something, you take it away from the whole.

**MARTHA
SPEAKS**



STEP 3

Next, cut the bottom off one paper cup. Then, put the top of the cup over the top of the bottle and tape them together.



STEP 4

To keep the dog **kibble** from coming out too fast, you need to make a stopper. First, cut a sideways slit across the paper towel tube. Then, cut a rectangle out of a **piece** of cardboard.

kibble: kibble is another word for dry dog food.

piece: a piece is a part of something whole.



STEP 5

Now, **assemble** the stopper by putting the cardboard **piece** into the slit in the paper towel tube.

assemble: to assemble something is to make it by putting the parts together.

piece: a piece is a part of something whole.

**MARTHA
SPEAKS**[™]



STEP 6

Then use tape to **connect** one end of the paper towel tube to the cup on the bottle.

connect: when you connect something to something else, you put them together.



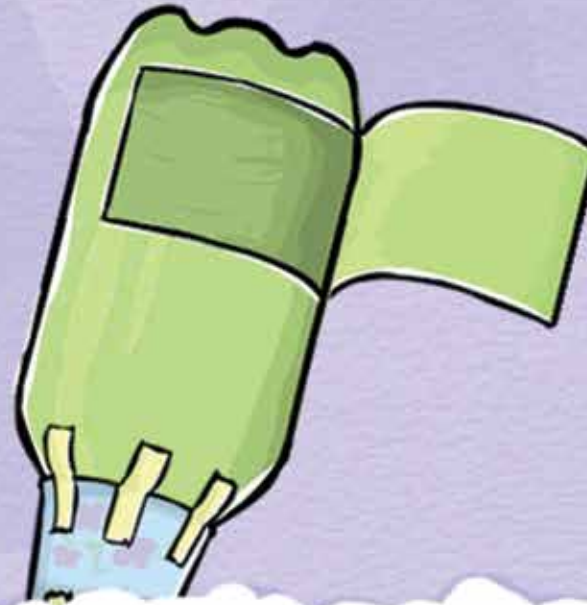
STEP 7

Next, cut the bottom off the second cup. Tape the bottom end of this cup to the other end of the tube.



STEP 8

With a grown-up's help, cut a door in the side of the bottle.



STEP 9

Now, fill the bottle half-way with dog **kibble**.

kibble: kibble is another word for dry dog food.

MARTHA
SPEAKS™



STEP 10

Finally, open the stopper on the paper towel tube to pour the **kibble** into a bowl. Get ready to chow down!

kibble: kibble is another word for dry dog food.

MARTHA
SPEAKS™