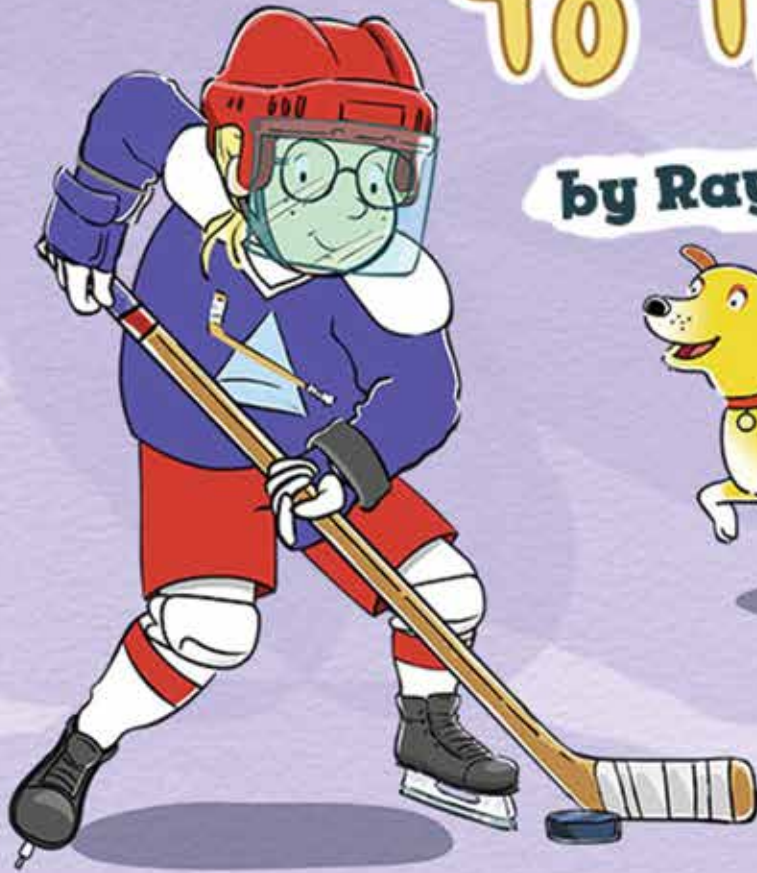




# GETTING TO THE GAME

by Raye Lankford



## MARTHA SPEAKS™



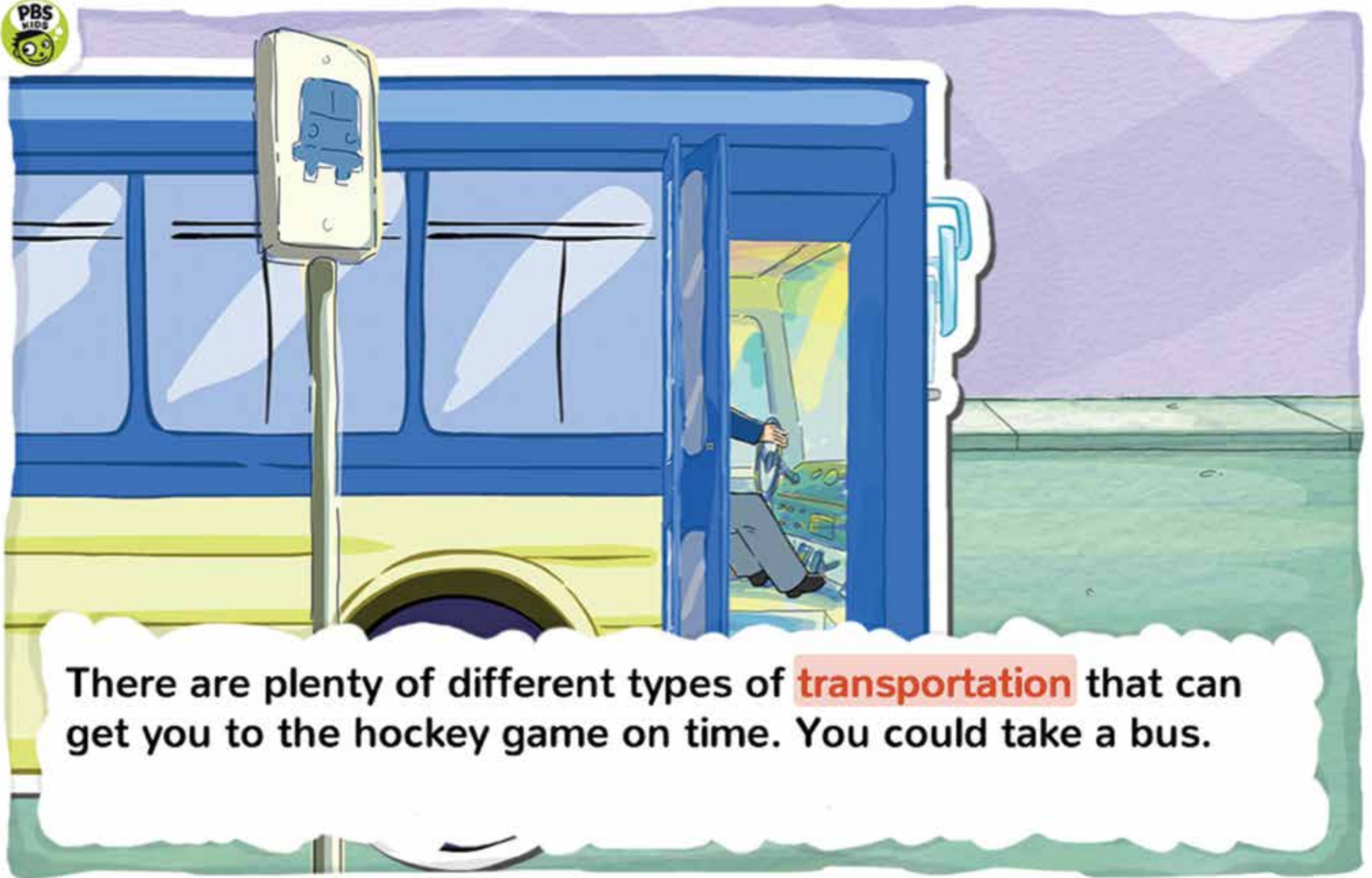
All characters and underlying materials from the "Martha" books™ and Susan Meddaugh. All other characters and underlying materials™ and 2013 WGBH. FOR PROMOTIONAL USE ONLY.

The contents of this printable certificate were developed under a grant from the Department of Education. However, those contents do not necessarily represent the policy of the Department of Education, and you should not assume endorsement by the Federal Government. The project is funded by a Ready to Learn Grant (PR/AWARD No. U295A100025, CFDA No. 84.294A) provided by the Department of Education to the Corporation for Public Broadcasting.



If you sleep too late on the day of your championship hockey game, try to stay calm.





There are plenty of different types of **transportation** that can get you to the hockey game on time. You could take a bus.

**transportation:** transportation is a way for people or things to move from one place to another.

**MARTHA  
SPEAKS**



If you miss the bus, don't worry. There are lots of other ways to **travel**. And they might even be faster because you can take shortcuts.

**travel:** when you travel you go from one place to another place.



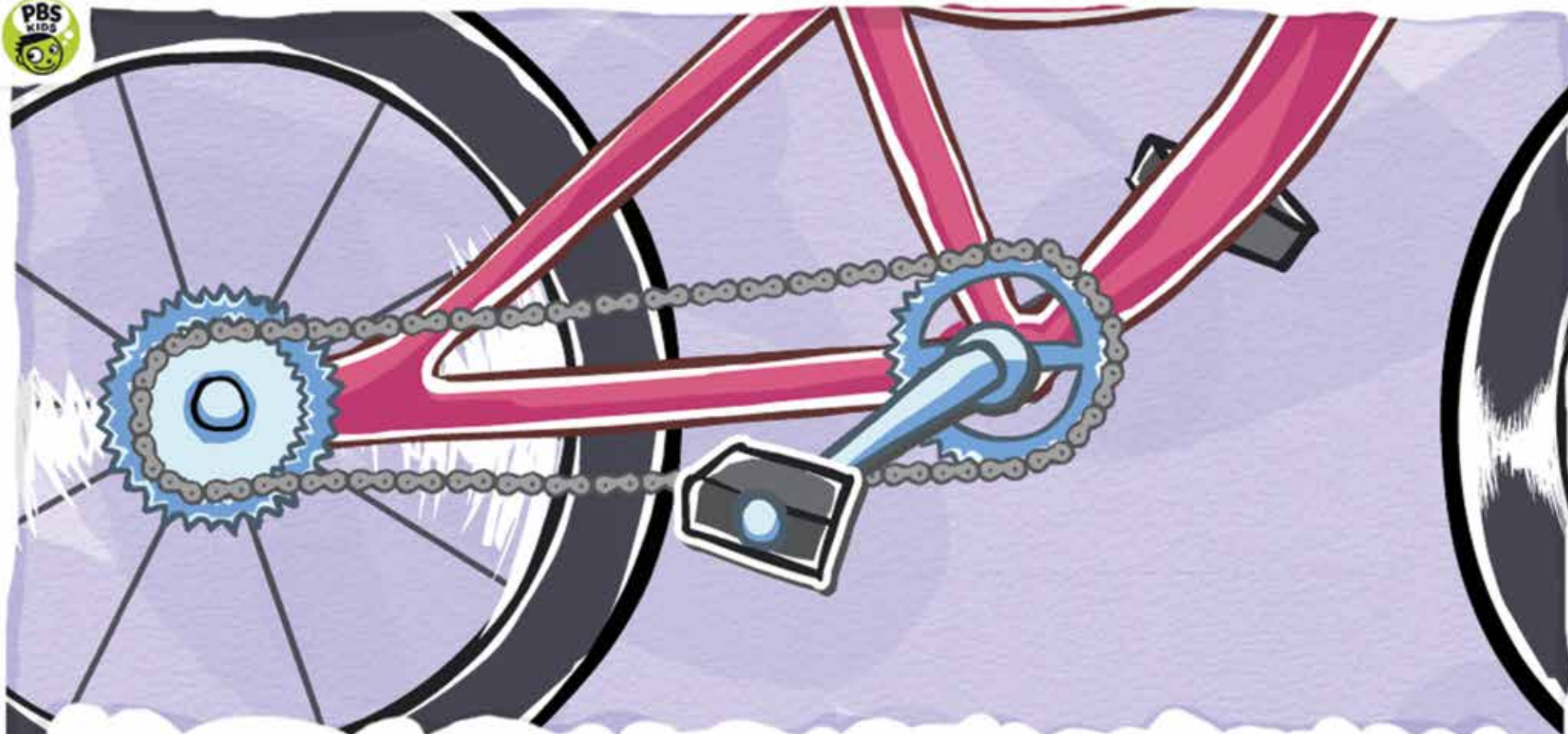


You might use a skateboard to **travel**. Skateboards have little wheels that **rotate** when you push off the ground with your feet. The wheels let you move much faster than if you were walking.

**travel:** when you travel you go from one place to another place.

**rotate:** when something rotates, it means it turns or spins on a fixed point .

**MARTHA  
SPEAKS™**



If you're in a big hurry, you might want to use a bicycle instead. Bikes have wheels that **rotate** using a chain **link** and **gears**. When you push on the bike pedals, the chain link and gear rotate, making the wheels rotate, too.

**rotate:** when something rotates, it means it turns or spins on a fixed point.

**link:** a link is something that connects two things together.

**gears:** a gear is a part of a machine that makes another part move.

**MARTHA  
SPEAKS™**





If you want to **accelerate**, you just have to pedal faster. The faster you pedal, the faster you'll go! You might even make the game on time!

**accelerate**: when you accelerate, you go faster.

**MARTHA  
SPEAKS**



Unless you get a flat tire-- then you'll need to find another **vehicle** to get to your game.

**vehicle**: a vehicle is something, such as a car, bicycle, or airplane, used to carry and move people or things .

**MARTHA  
SPEAKS**<sup>TM</sup>





If you're lucky, your friend might have a go-cart you can borrow. And if you're really, really lucky, maybe the go-cart has a solar-powered **engine!** Solar-powered engines take the energy from sunlight and use it to make the go-cart wheels **rotate**. Your solar-powered go-cart moves **automatically**. Just flip the switch and hang on!

**engine:** an engine is a machine that uses energy to work.

**rotate:** when something rotates, it means it turns or spins on a fixed point.

**automatically:** when something is automatic it works by itself.

**MARTHA  
SPEAKS**<sup>™</sup>



But if the batteries on your solar-powered go-cart run out of energy, don't worry. There's another way you can get to your championship hockey game on time. You can run!

**MARTHA  
SPEAKS**





With the help of a few different kinds of **transportation** (and your own two feet), you'll soon be leading your team to victory!

**transportation:** transportation is a way for people or things to move from one place to another.

**MARTHA  
SPEAKS**